

LANDMARK RANCH UNIT 2 | PARCELS 9 & 10

EXCLUSIVE LISTING | 244 P&E LOTS



LOCATION The Property is located at the SWC 9th Street & Kenworthy Road, Coolidge, Arizona

PRICE Submit

SIZE Lots: 244 P&E Lots

Parcel	Lot Count	Lot Size
Parcel 9	119	45' x 110'
Parcel 10	125	50' x 110'

ENTITLEMENTS [Click to View Parcel 9 Final Plat](#)
[Click to View Parcel 10 Final Plat](#)

ZONING PAD - [Click to View Landmark Ranch PAD Document](#)

COOLIDGE IMPACT FEES (BUYER TO VERIFY)

Wastewater & Reclaimed	Streets	Fire	Parks & Recreation	Total
\$2,183	\$3,235	\$426	\$1,058	\$6,902

*Excludes Arizona Water Fee

UTILITIES Power - Electrical District 2
 Water - Arizona Water Company
 Sewer - City of Coolidge
 Gas - Southwest Gas Company

Subject

Ben Heglie
 bheglie@landadvisors.com
 480.874.4302

Bret Rinehart
 brinehart@landadvisors.com
 480.874.4306

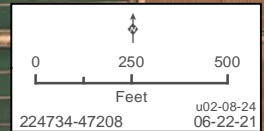
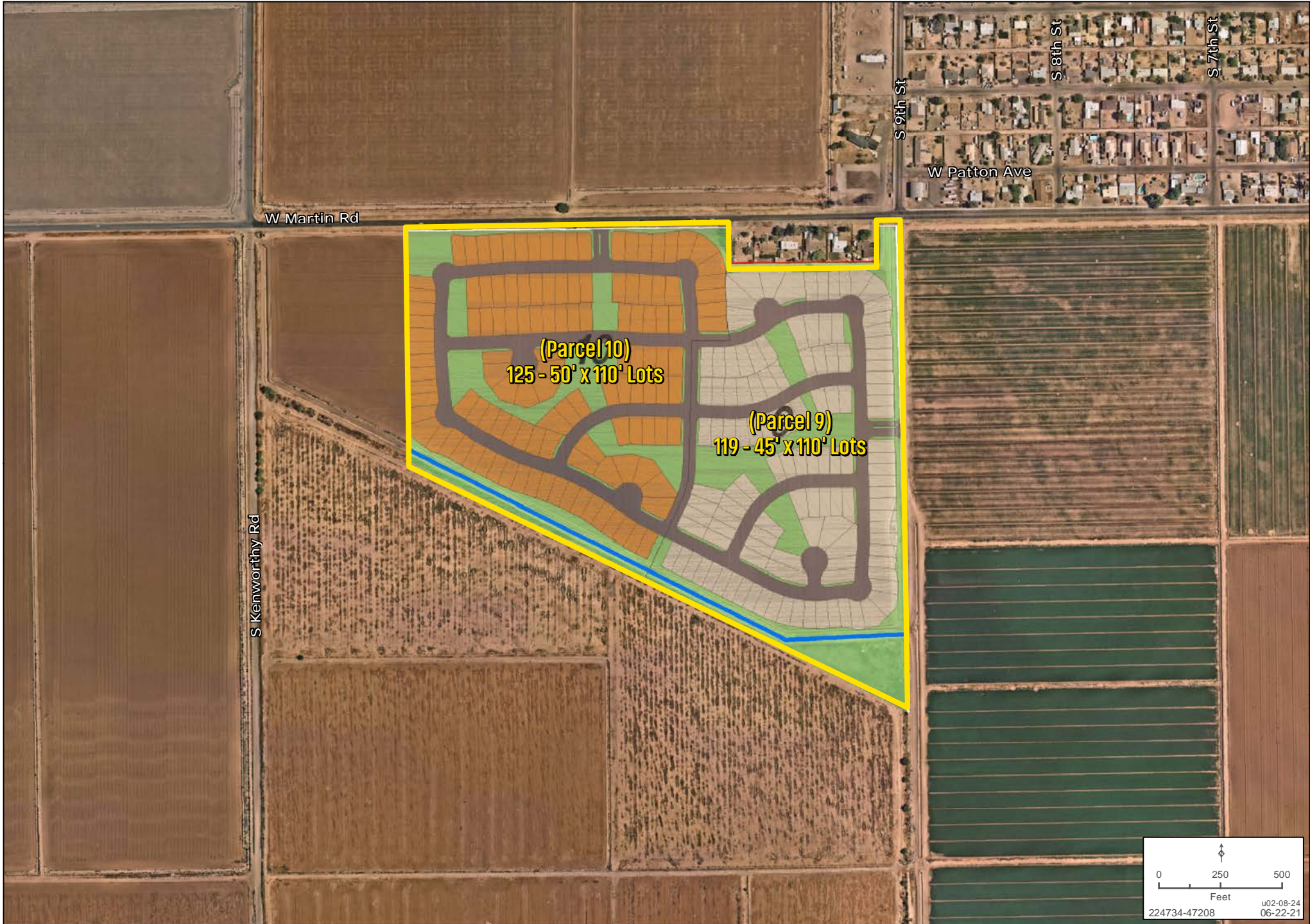
Ryan Semro
 rsemro@landadvisors.com
 480.874.4317

480.483.8100

4900 N Scottsdale Road, Suite 3000
 Scottsdale, AZ 85251
 LandAdvisors.com

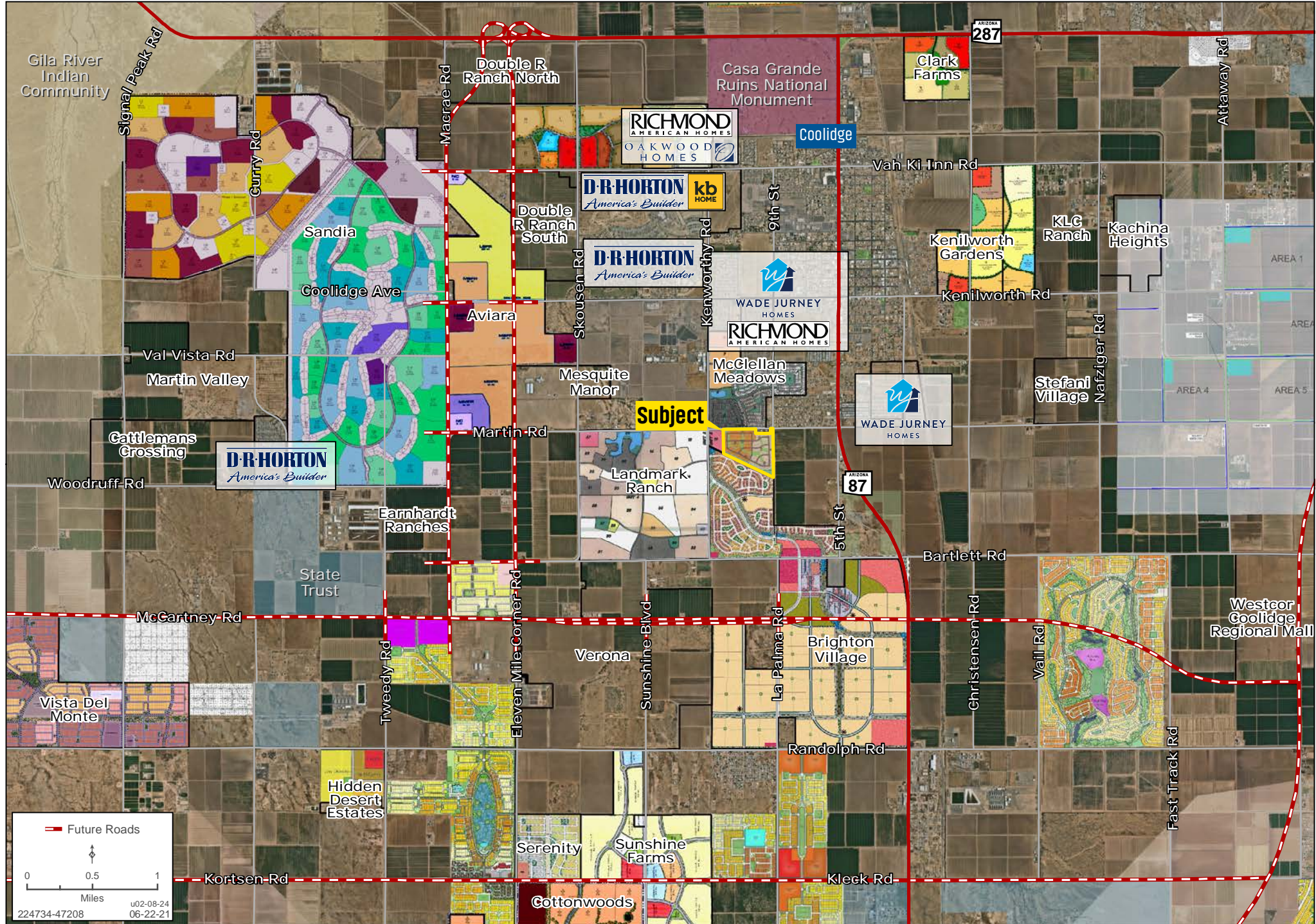
DETAIL MAP

Ben Heglie | Bret Rinehart | Ryan Semro | 480.483.8100 | www.landadvisors.com



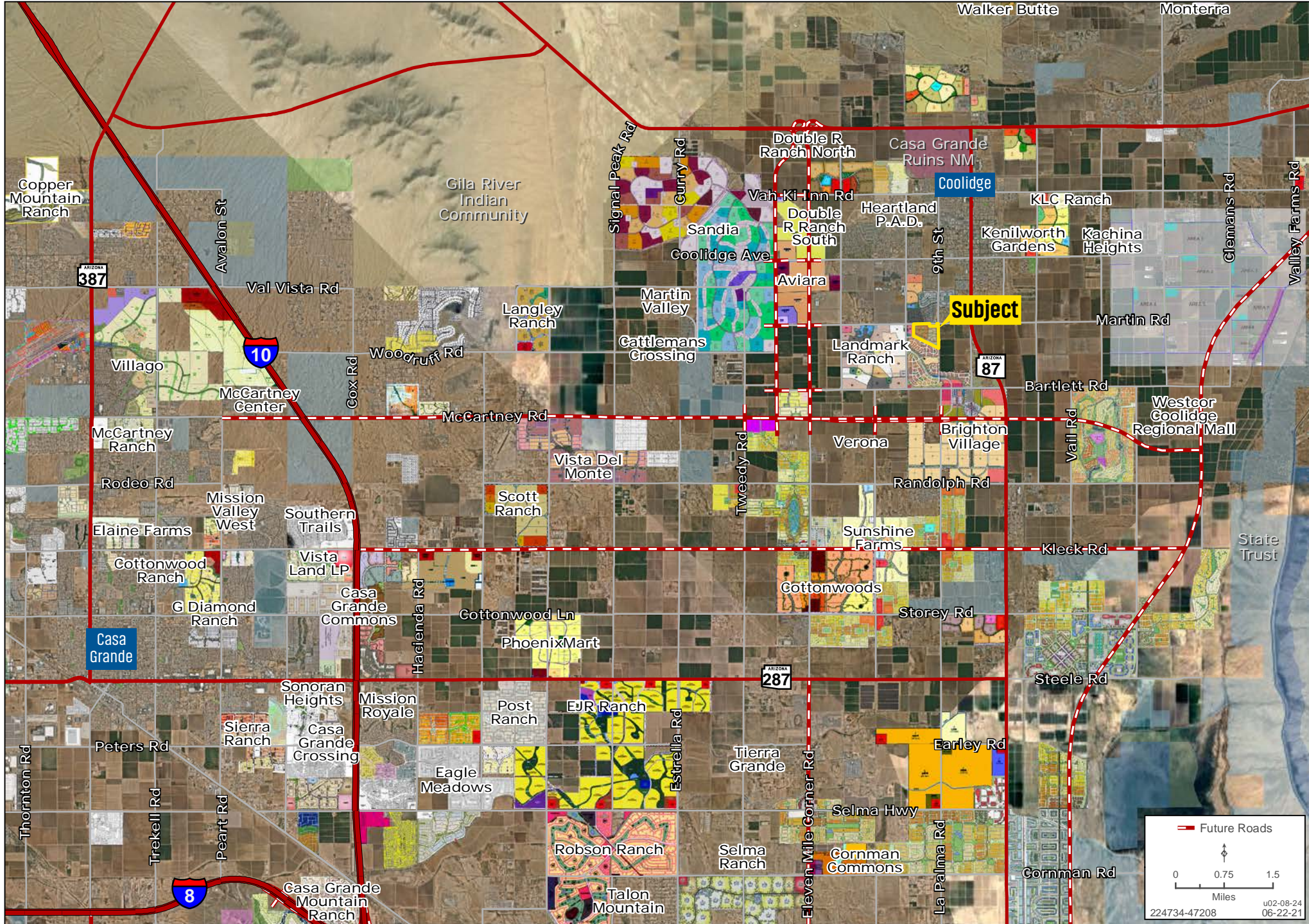
AREA MAP

Ben Heglie | Bret Rinehart | Ryan Semro | 480.483.8100 | www.landadvisors.com



DEVELOPMENT MAP

Ben Heglie | Bret Rinehart | Ryan Semro | 480.483.8100 | www.landadvisors.com



REGIONAL MAP

Ben Heglie | Bret Rinehart | Ryan Semro | 480.483.8100 | www.landadvisors.com

