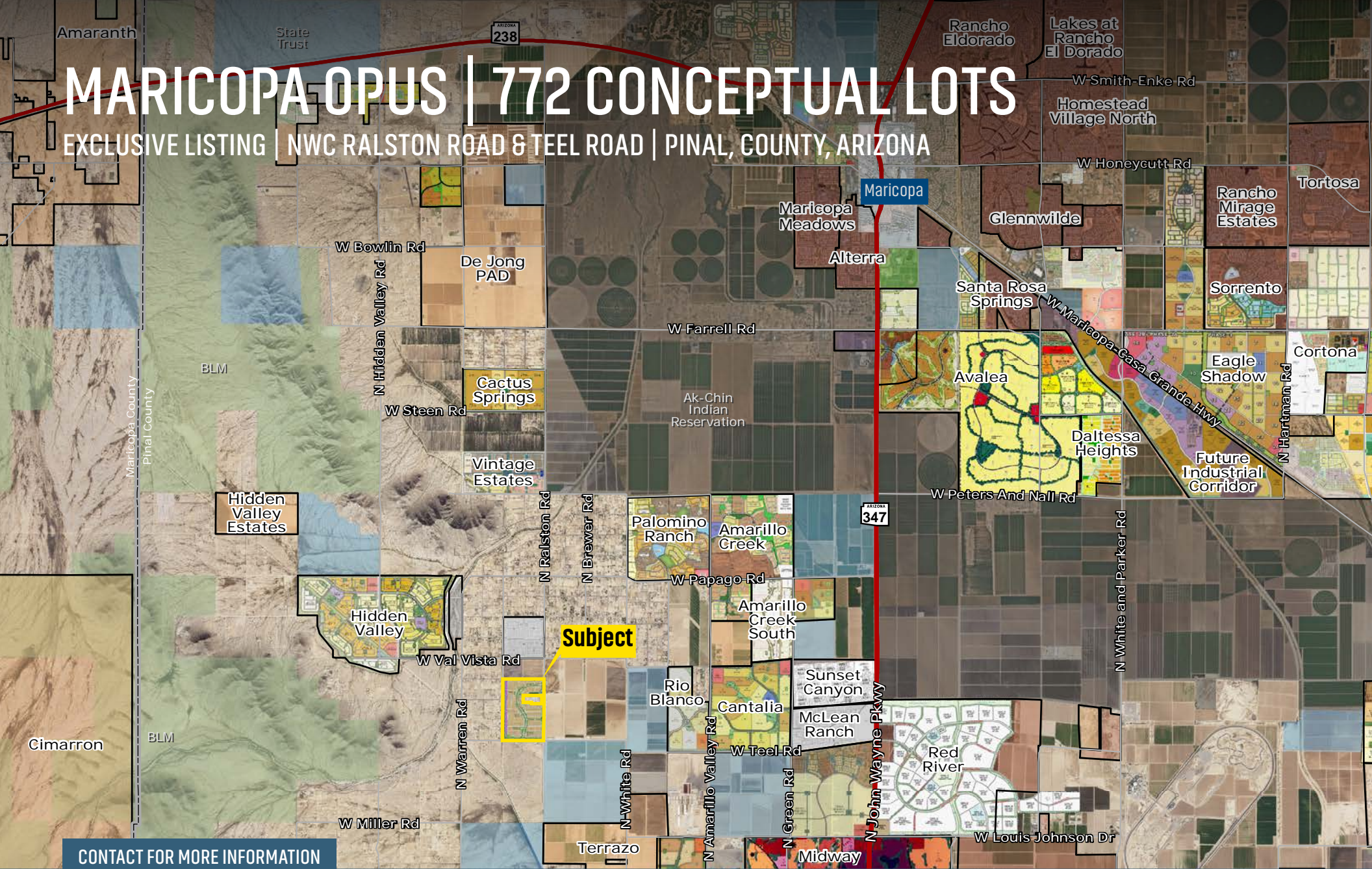


MARICOPA OPUS | 772 CONCEPTUAL LOTS

EXCLUSIVE LISTING | NWC RALSTON ROAD & TEEL ROAD | PINAL COUNTY, ARIZONA



CONTACT FOR MORE INFORMATION

Ben Heglie
bheglie@landadvisors.com
480.874.4302

Ryan Semro
rsemro@landadvisors.com
480.874.4317

Bret Rinehart
brinehart@landadvisors.com
480.874.4306

 **Land Advisors**
ORGANIZATION

The information contained herein is from sources deemed reliable. We have no reason to doubt its accuracy but do not guarantee it. It is the responsibility of the person reviewing this information to independently verify it. The information contained within is subject to change without notice. AZPinal233654 - February 8, 2024 4:04 PM.

480.483.8100 | LandAdvisors.com

SUMMARY



LOCATION

NWC Ralston Road & Teel Road, Maricopa, Pinal County, Arizona



PRICE

Submit



SIZE

±225 Acres



LOTS

772 Conceptual Lots

LOT COUNT	LOT SIZE
232	45' x 120'
332	55' x 120'
185	65' x 125'
22	1/2 Acre



ZONING

PAD - [Click to View PAD Approvals](#)



UTILITIES

Water - Global Water Management
Sewer - Global Water Management
Power - Electrical District 3 (ED3)

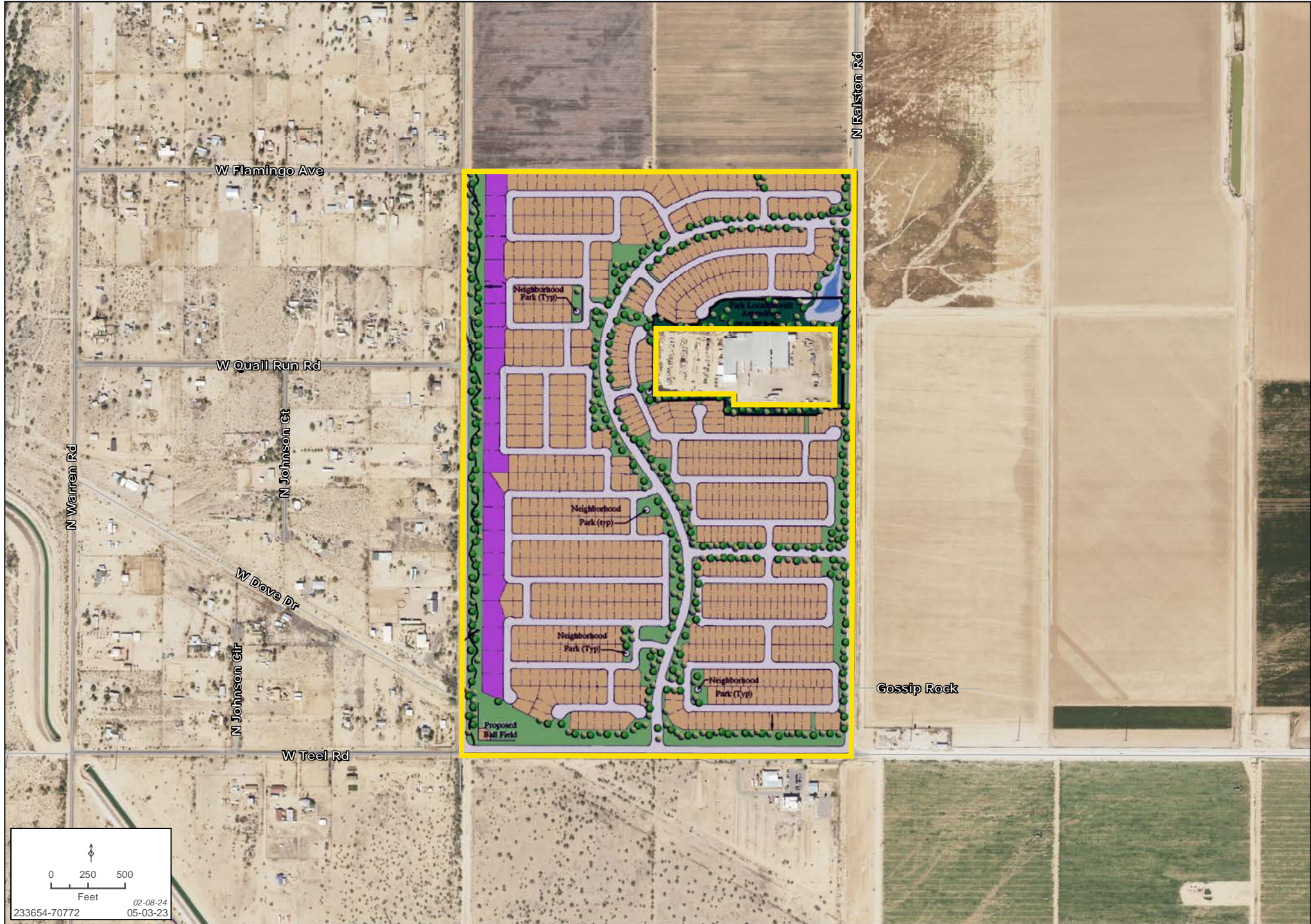


SCHOOLS

Maricopa Elementary School
Maricopa Wells Middle School
Maricopa High School

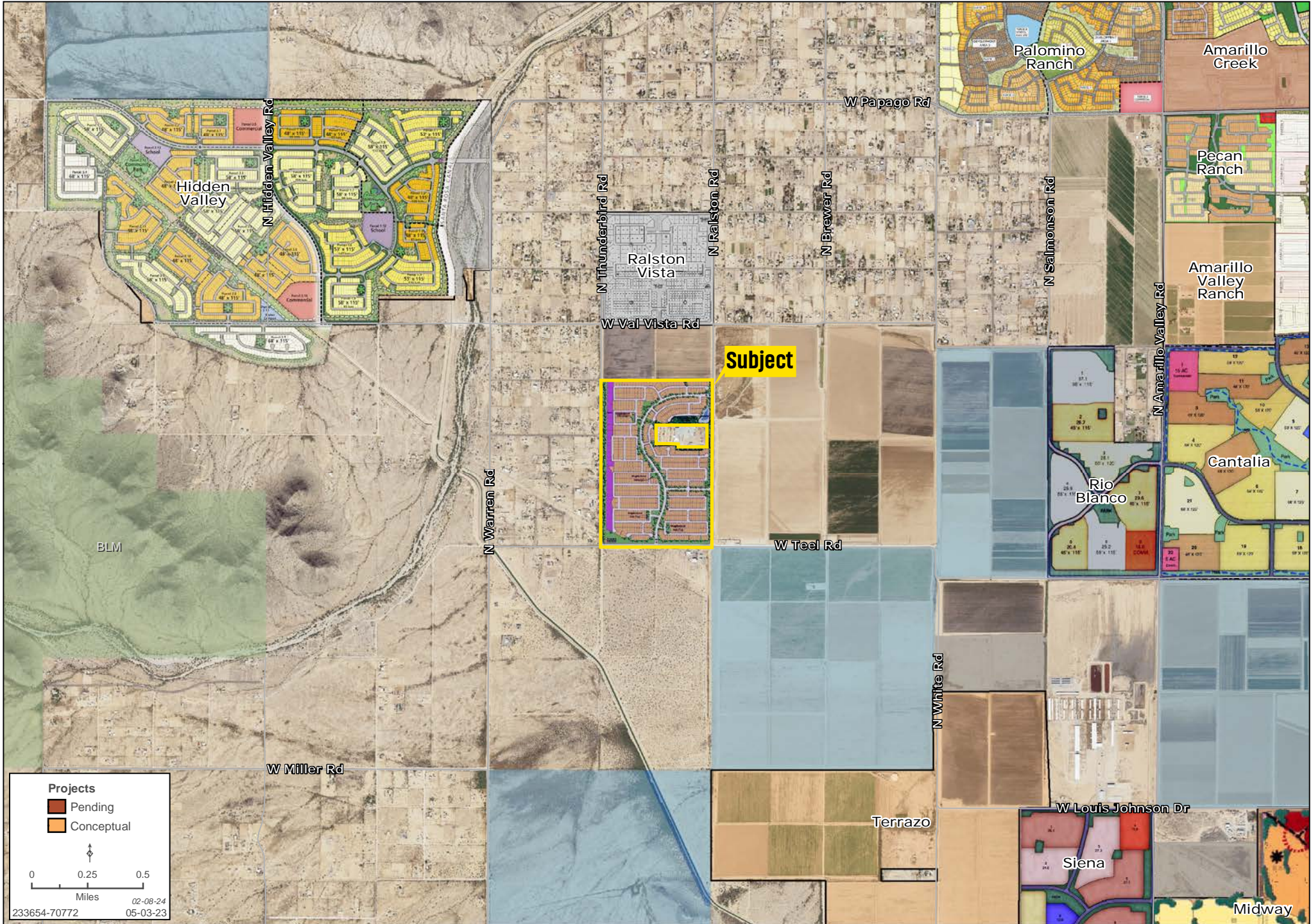
DETAIL MAP

Ben Heglie | Ryan Semro | Bret Rinehart | 480.483.8100 | www.landadvisors.com



AREA MAP

Ben Heglie | Ryan Semro | Bret Rinehart | 480.483.8100 | www.landadvisors.com



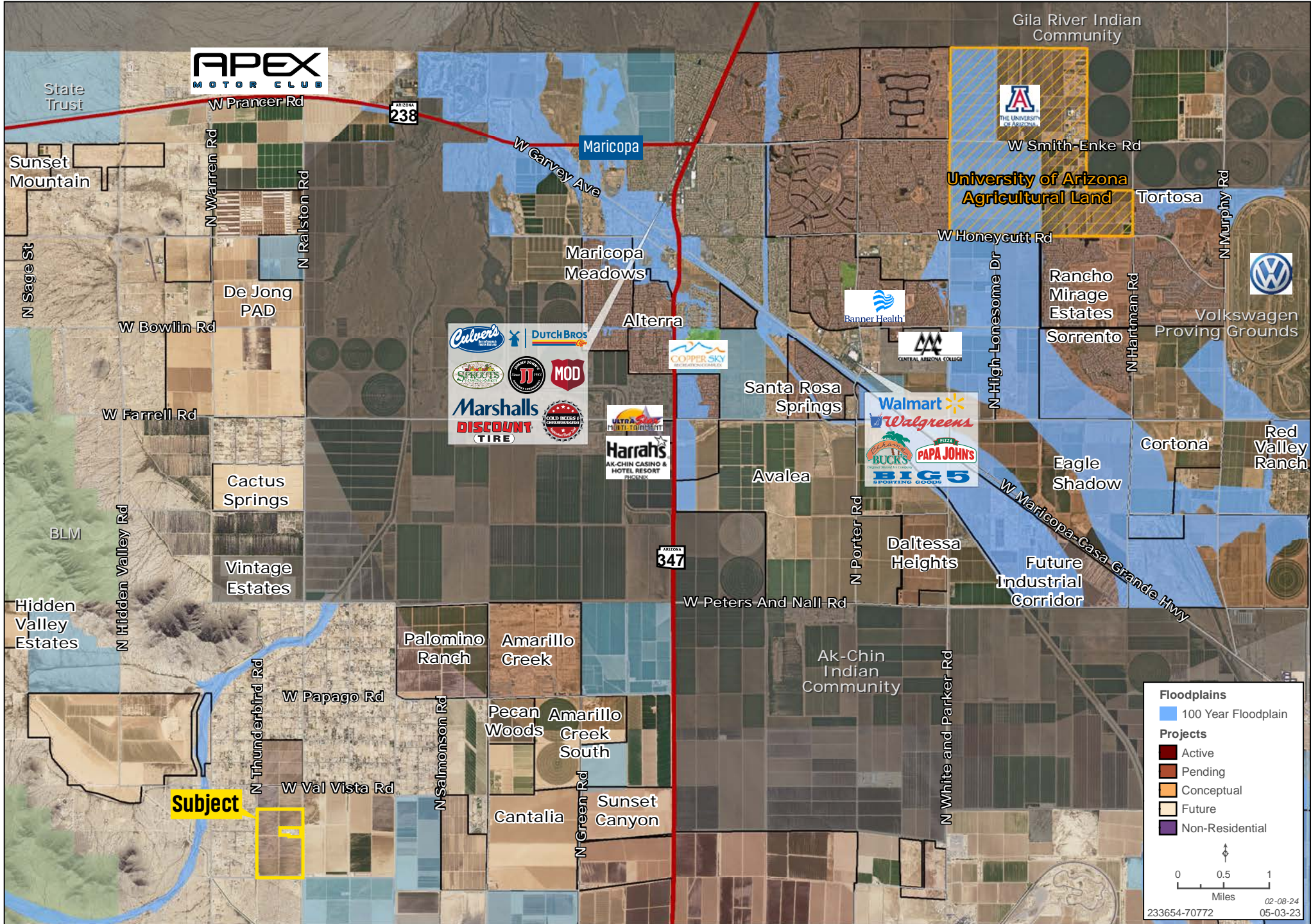
BUILDER MAP

Ben Heglie | Ryan Semro | Bret Rinehart | 480.483.8100 | www.landadvisors.com



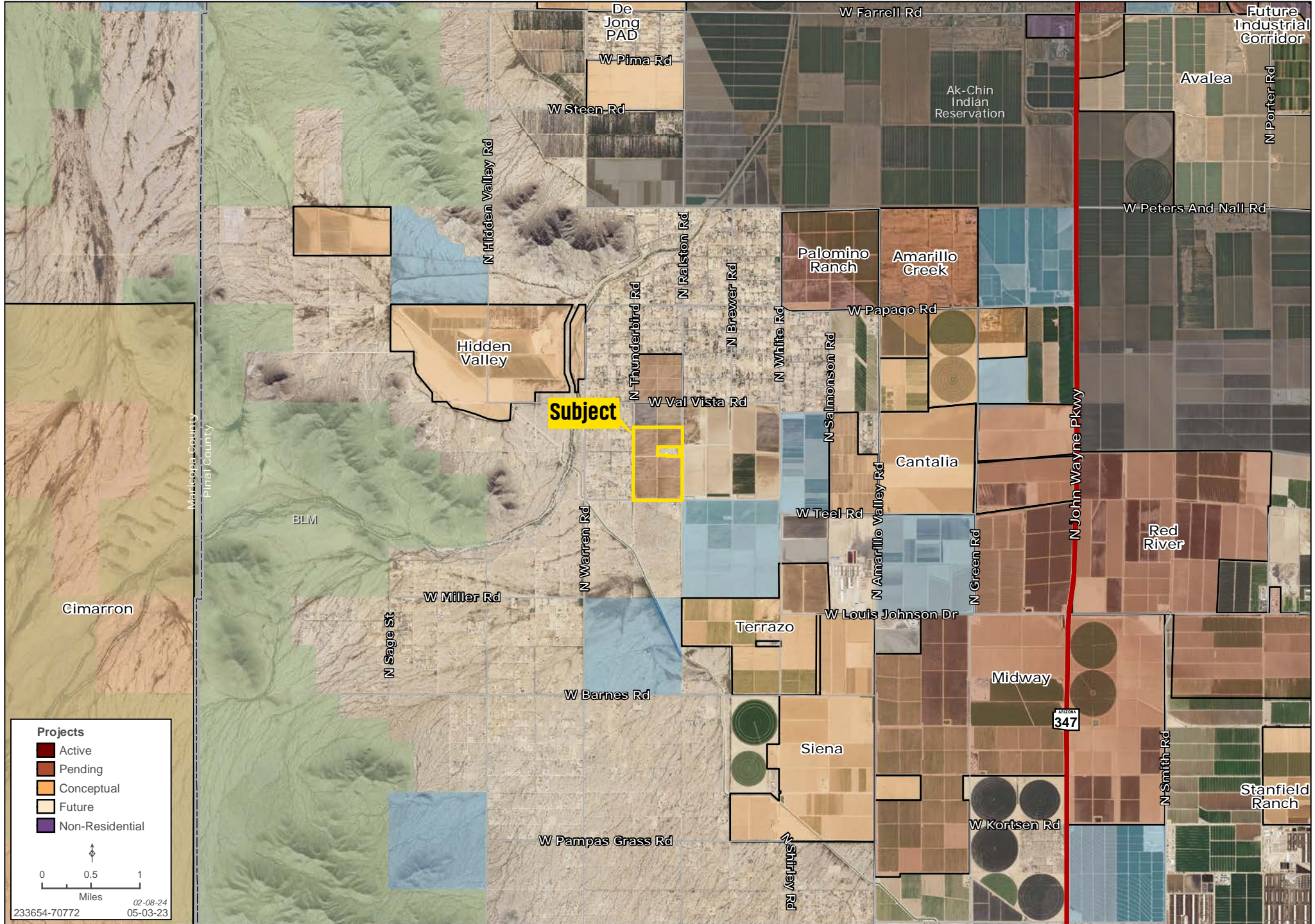
AMENITIES MAP

Ben Heglie | Ryan Semro | Bret Rinehart | 480.483.8100 | www.landadvisors.com



DEVELOPMENT MAP

Ben Heglie | Ryan Semro | Bret Rinehart | 480.483.8100 | www.landadvisors.com





480.483.8100 | [LandAdvisors.com](https://www.LandAdvisors.com)

The information in this email and any attachments regarding any property has been obtained from sources believed reliable, but we have not verified it and we make no guarantee, warranty, or representation as to its accuracy or completeness, and we do not undertake to update or correct any of the information presented. Any projections, opinions, assumptions, or estimates ("forward-looking statements") used are, for example, only and do not represent the current or future performance of the property and actual results may differ materially from such forward-looking statement due to, without limitation, changes in: (i) the market, (ii) governmental legal, regulatory or permitted use changes, and (iii) other factors. You and your advisors should conduct a careful, independent investigation of the property to determine to your satisfaction the property's suitability for your needs. Any reliance on this information is at your own risk and is subject to change, prior sale or complete withdrawal. AZPinal233654 - February 8, 2024 4:04 PM.